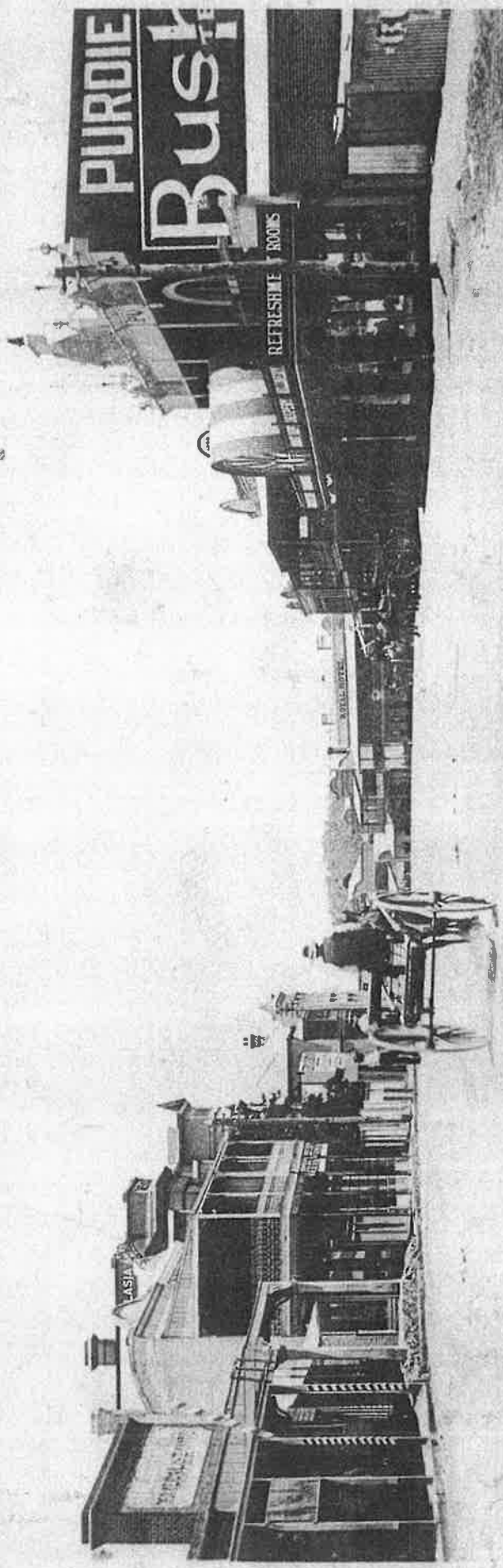




EMPIRE DAY



Purdie & Co., Grenfell

1907

108

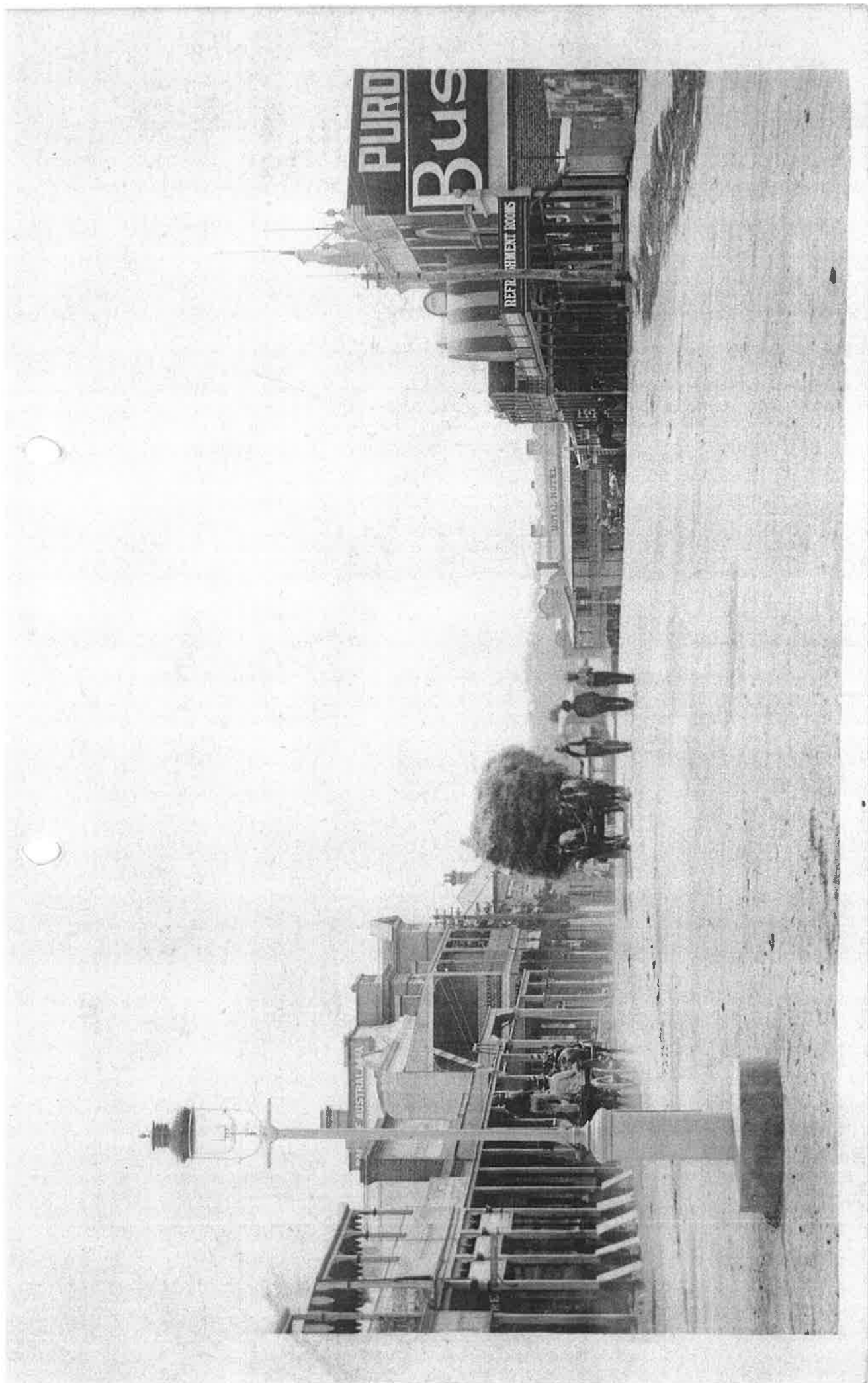
Main Street, looking East, Grenfell

0596



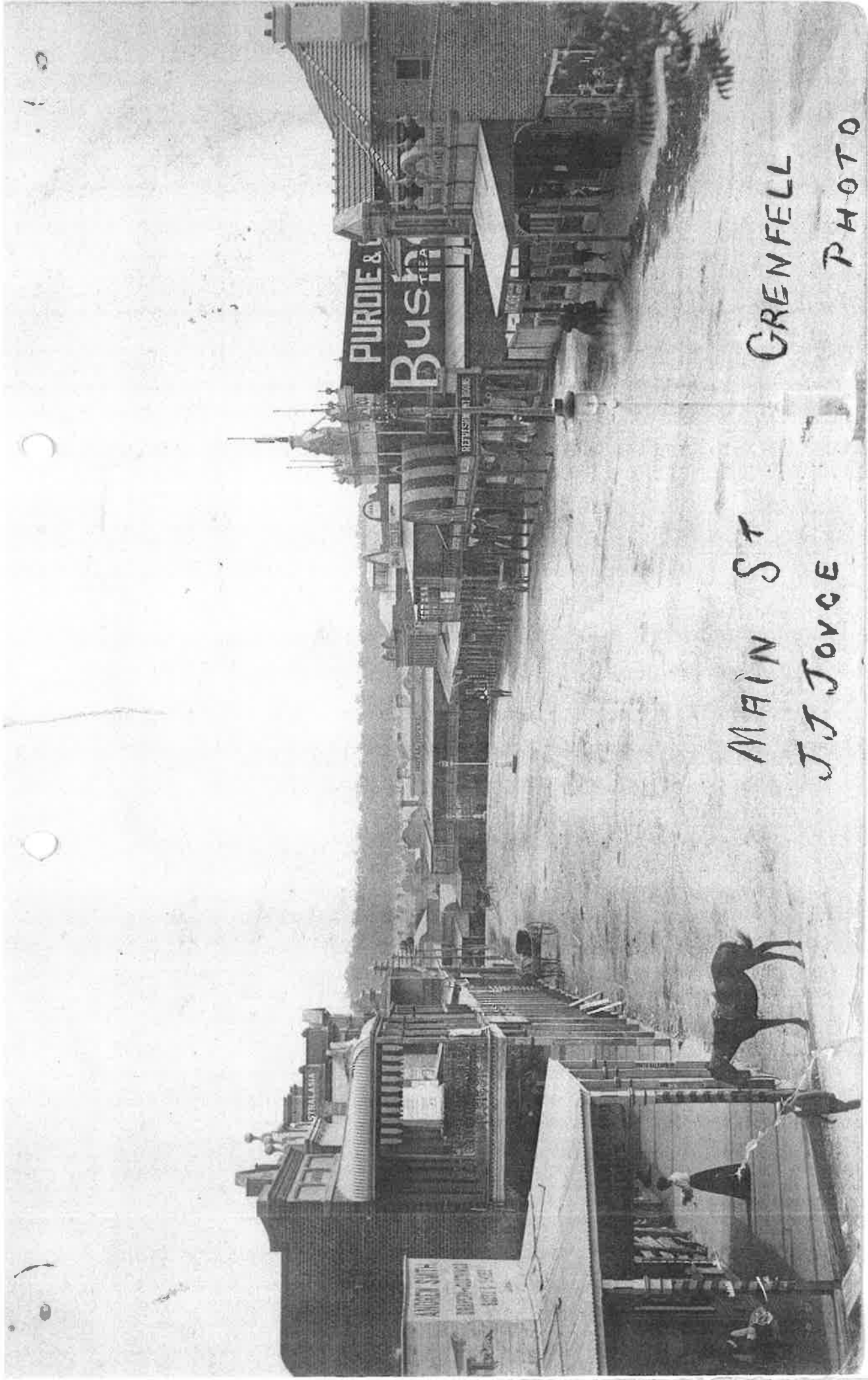
Main Street, looking West, Grenfell.

1908



0594

Looking West



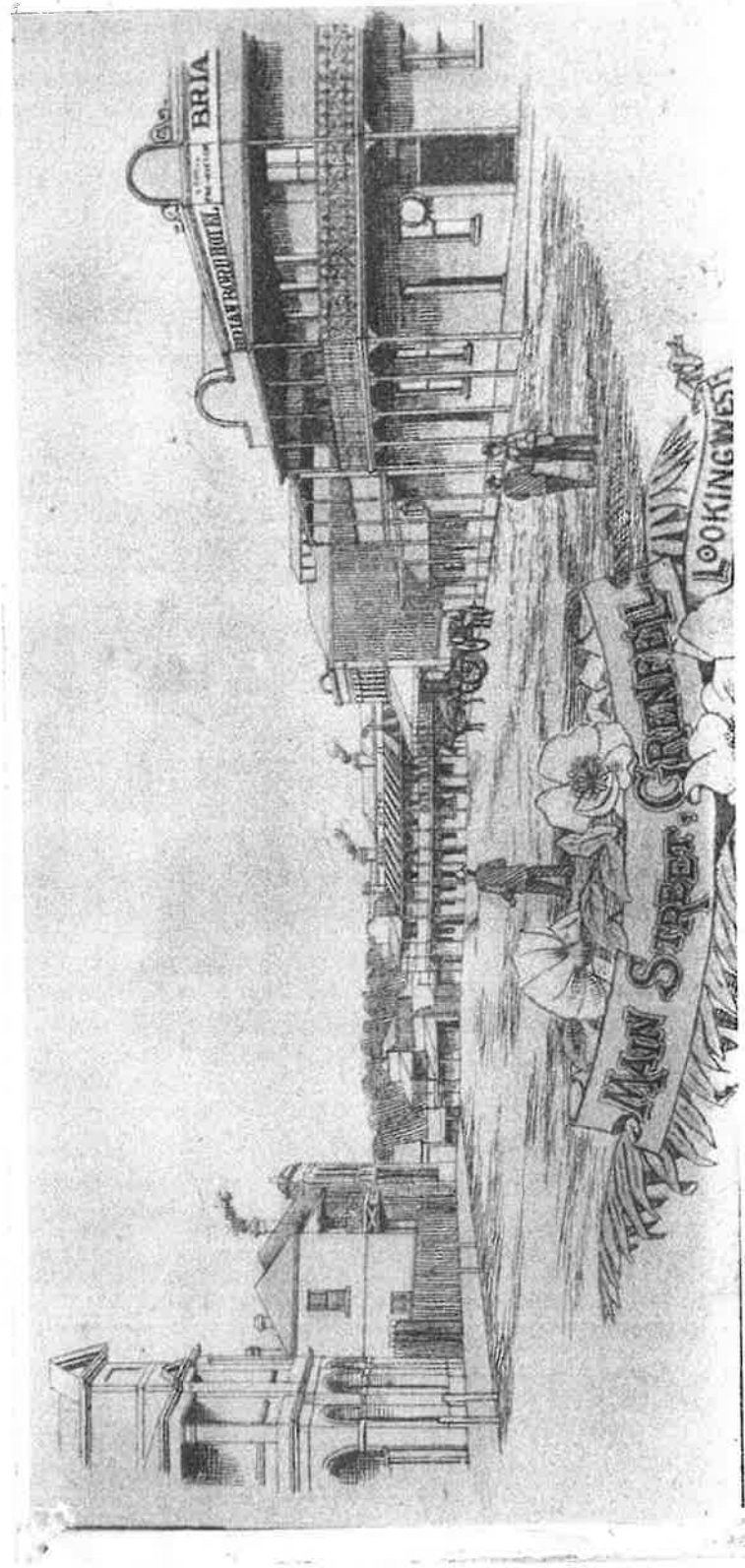
MAIN ST
J J JOYCE

GRENFELL
PHOTO

0595

after 1909

LB 1650 97





Under the Arch

AUG 6 1910

By J. Joyce



State Governor's Visit

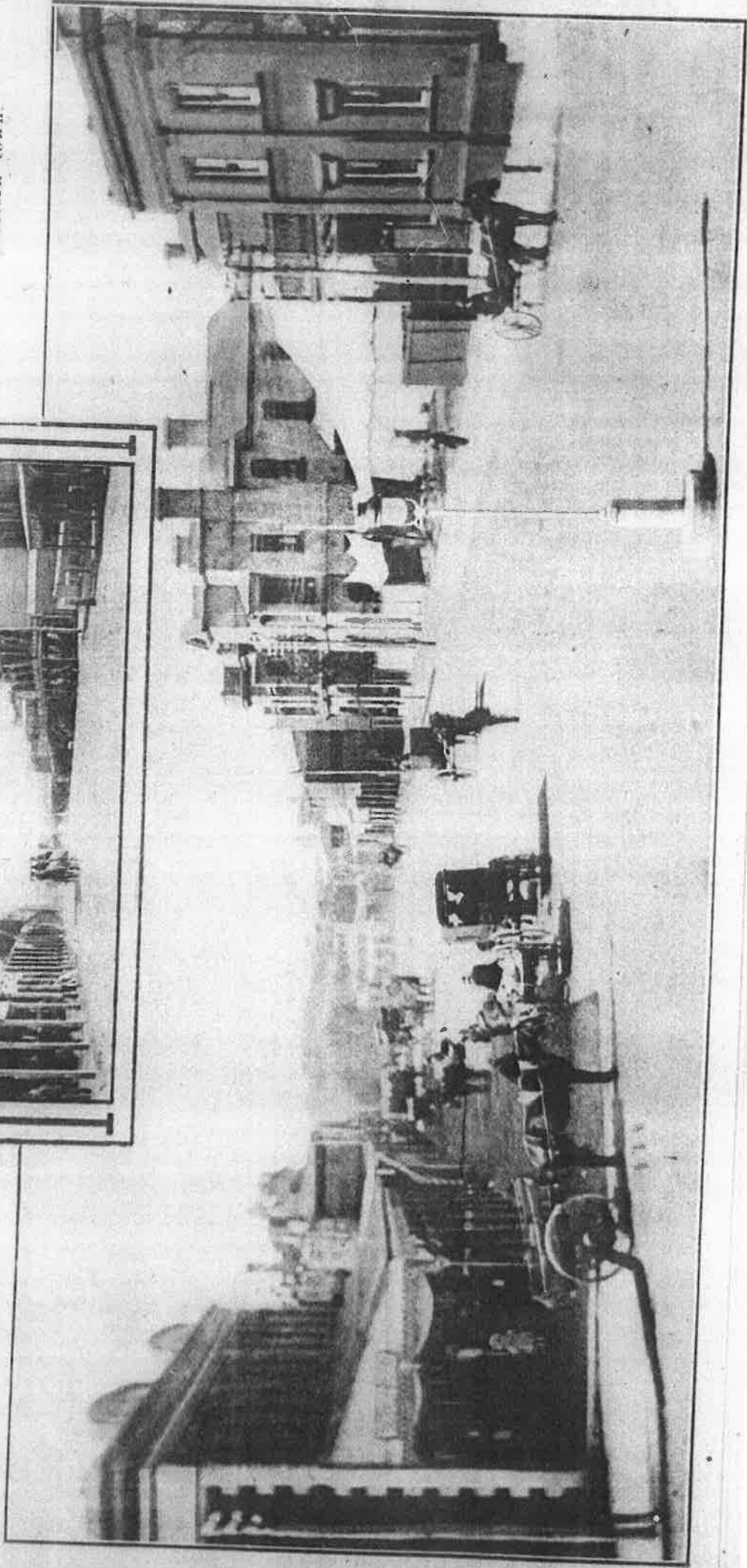
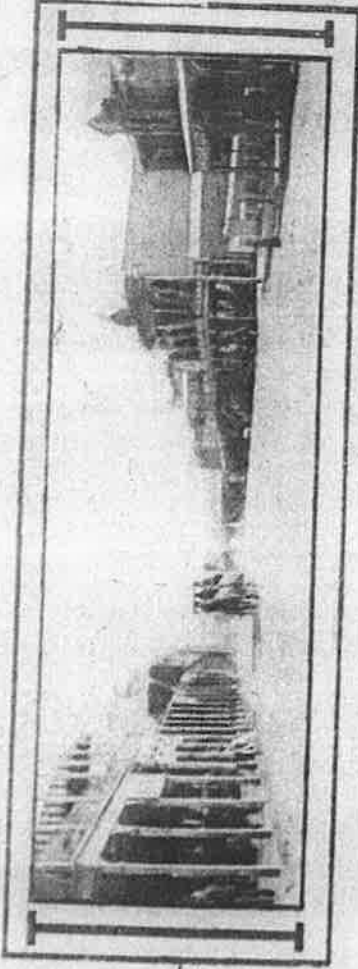
Greenville Aug 4th 1910

A. L. Proctor (Photo)

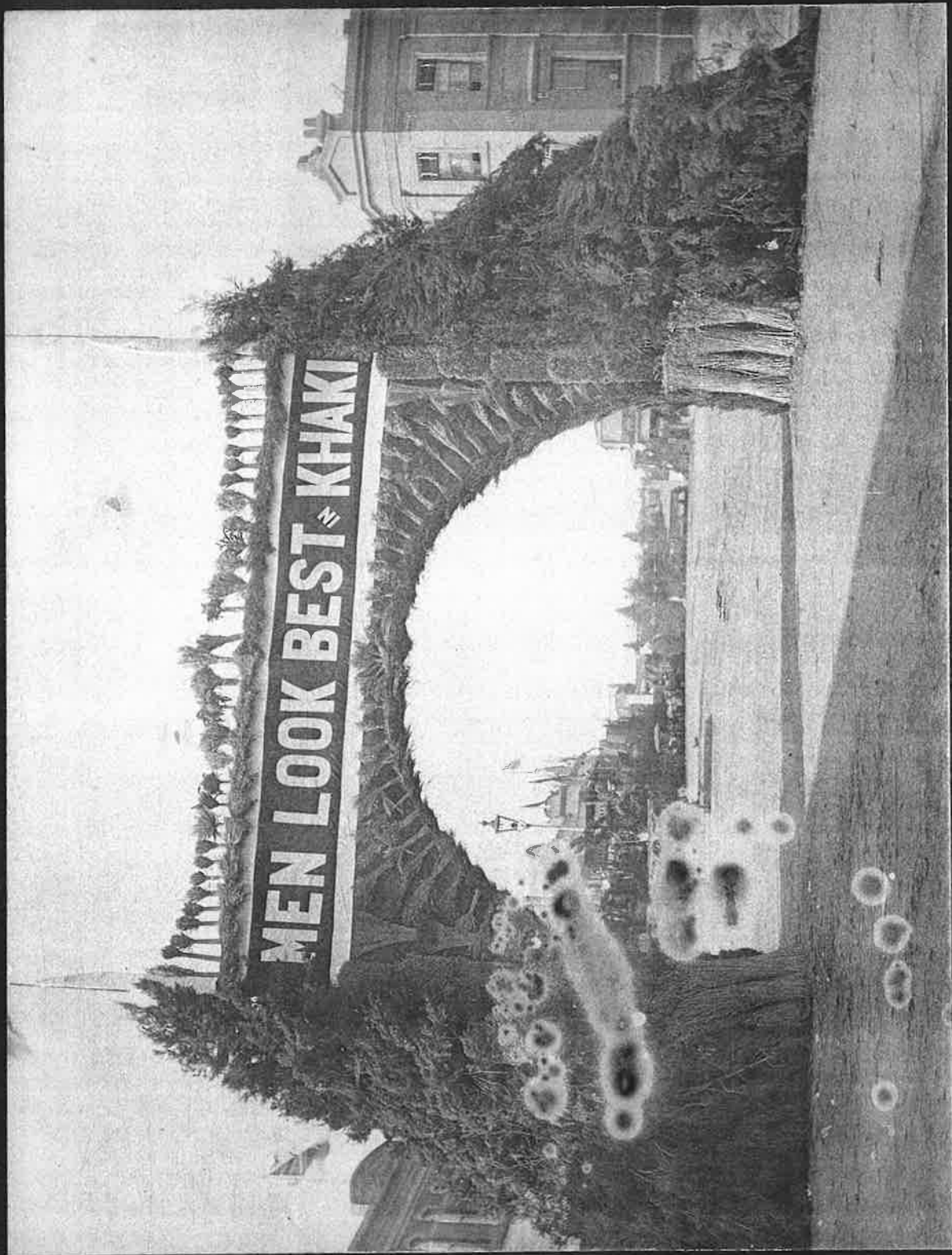
OUR BUSY COUNTRY TOWNS.

No. 14.

Views of Main-street, the principal thoroughfare of Grenfell, a prosperous western town.



0799





UNITED FRIENDLY SOCIETIES PROCESSION, GRENFELL MARCH 28TH 1910

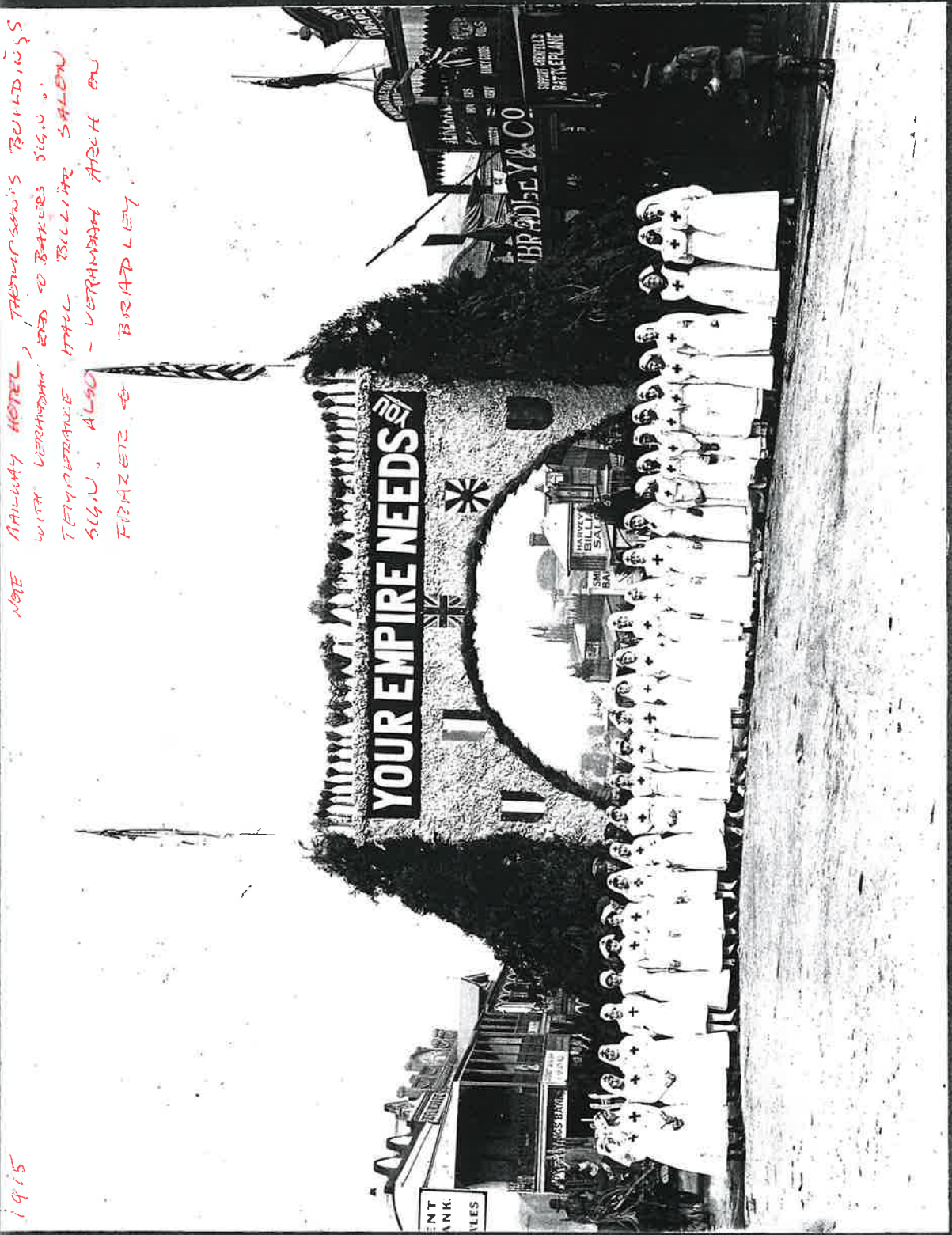
R. L. PROCTER (PHOTO) MAIN ST.

0611/2

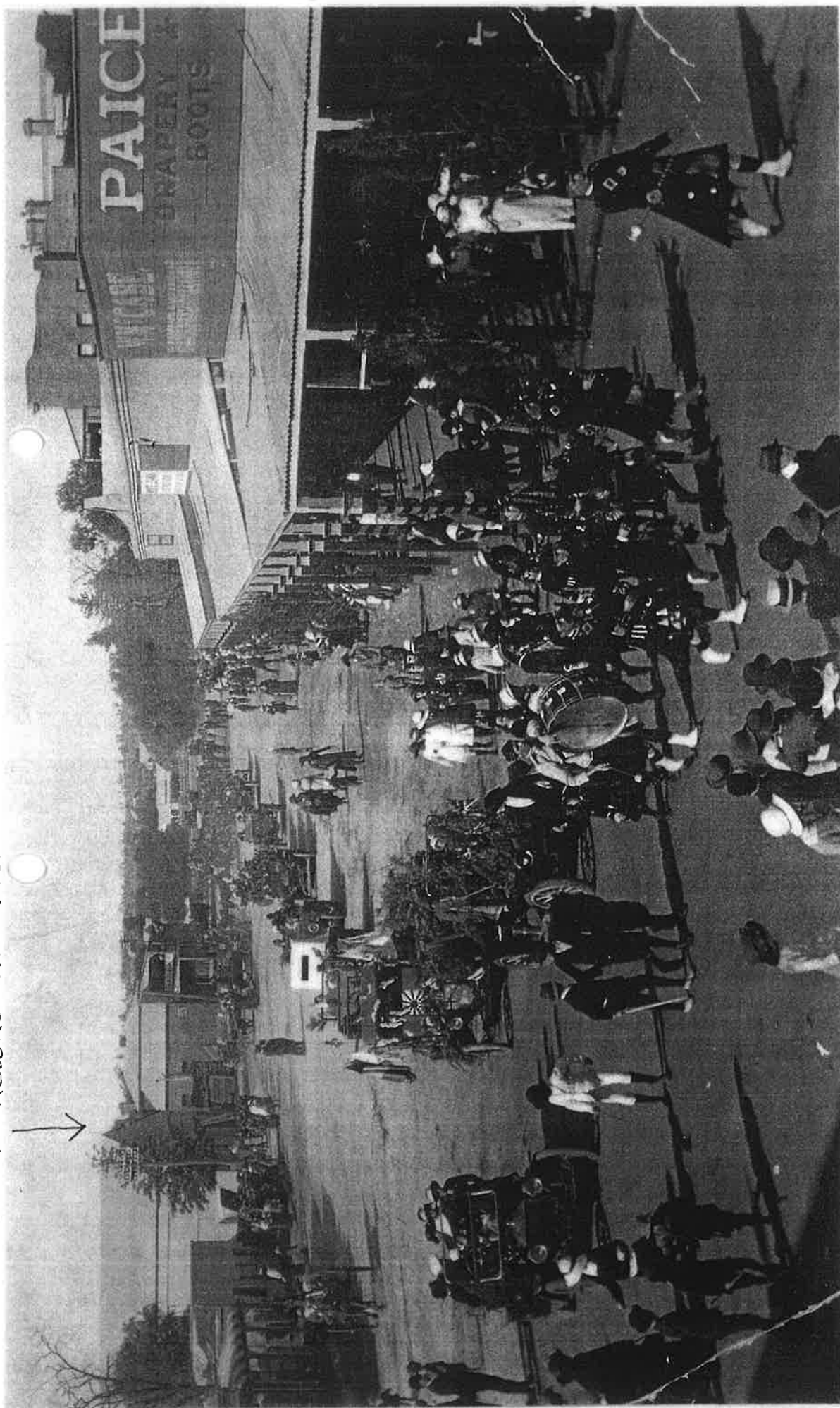
The Howard ... of "New Grand ... K ... " Arch

1915

NOTE
NATIVE HOTEL, THOMPSON'S BUILDINGS
WITH VERANDAH, END TO BAKERS SIGN,
TELEPHONE HALL, BULLIAR SALEM
SIGN, ALSO - VERANDAH ARCH ON
FRIZERS & BRADLEY.

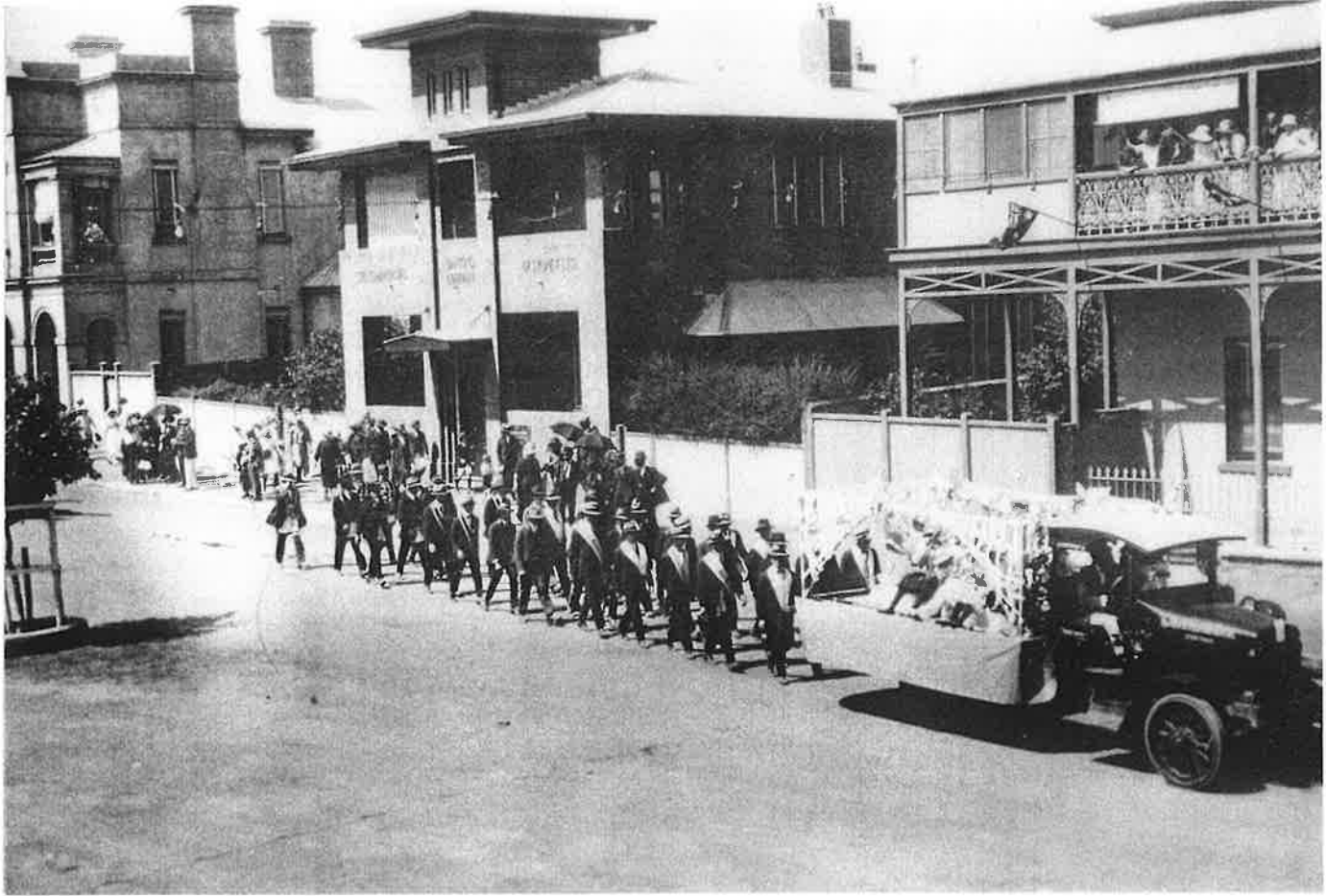


ROYAL PICTURE THEATRE



POST 1911 - PRE 1918
(PAICE BURNED DOWN 1917)

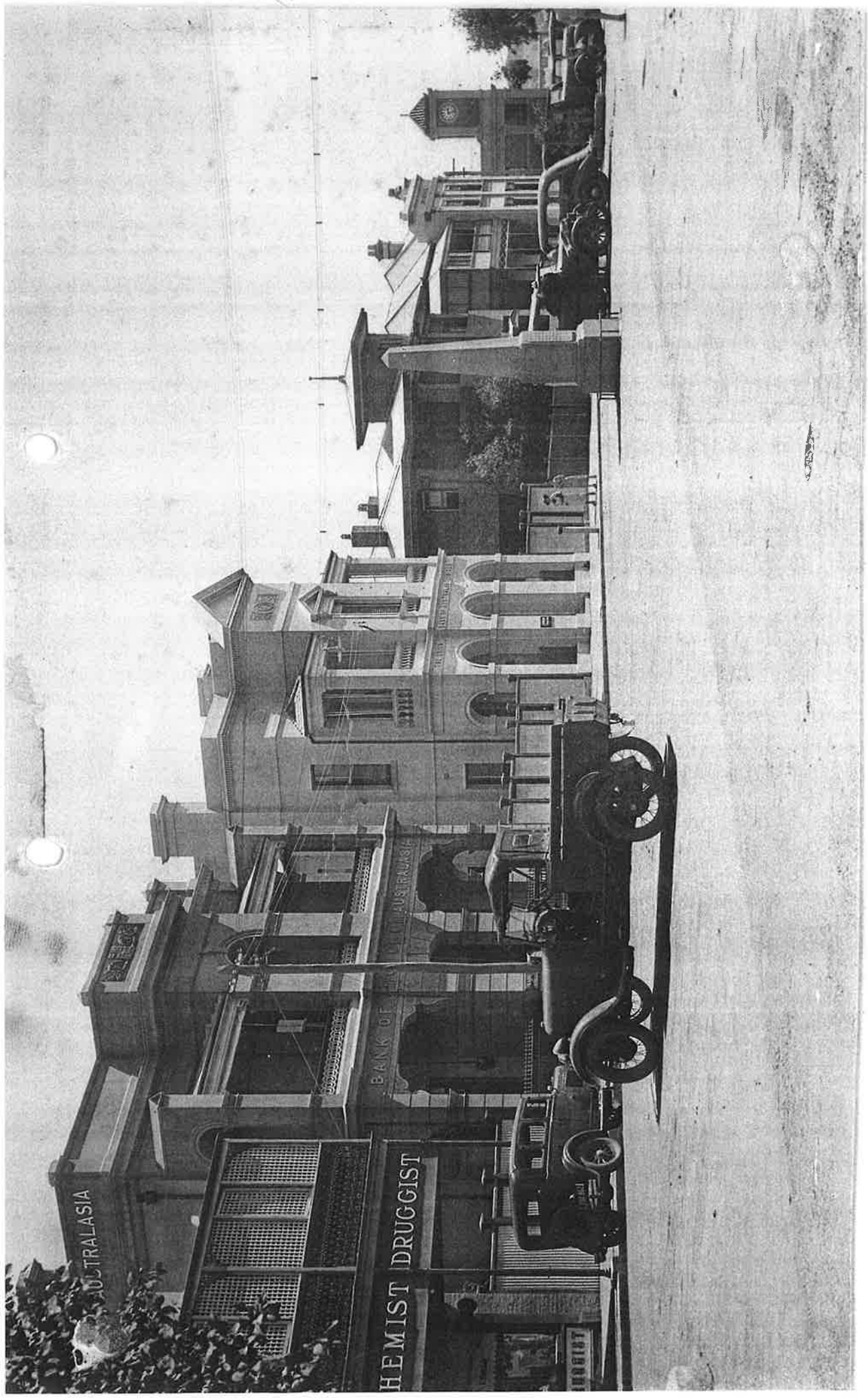
GDHS PHOTO
1111



C. 1924

162

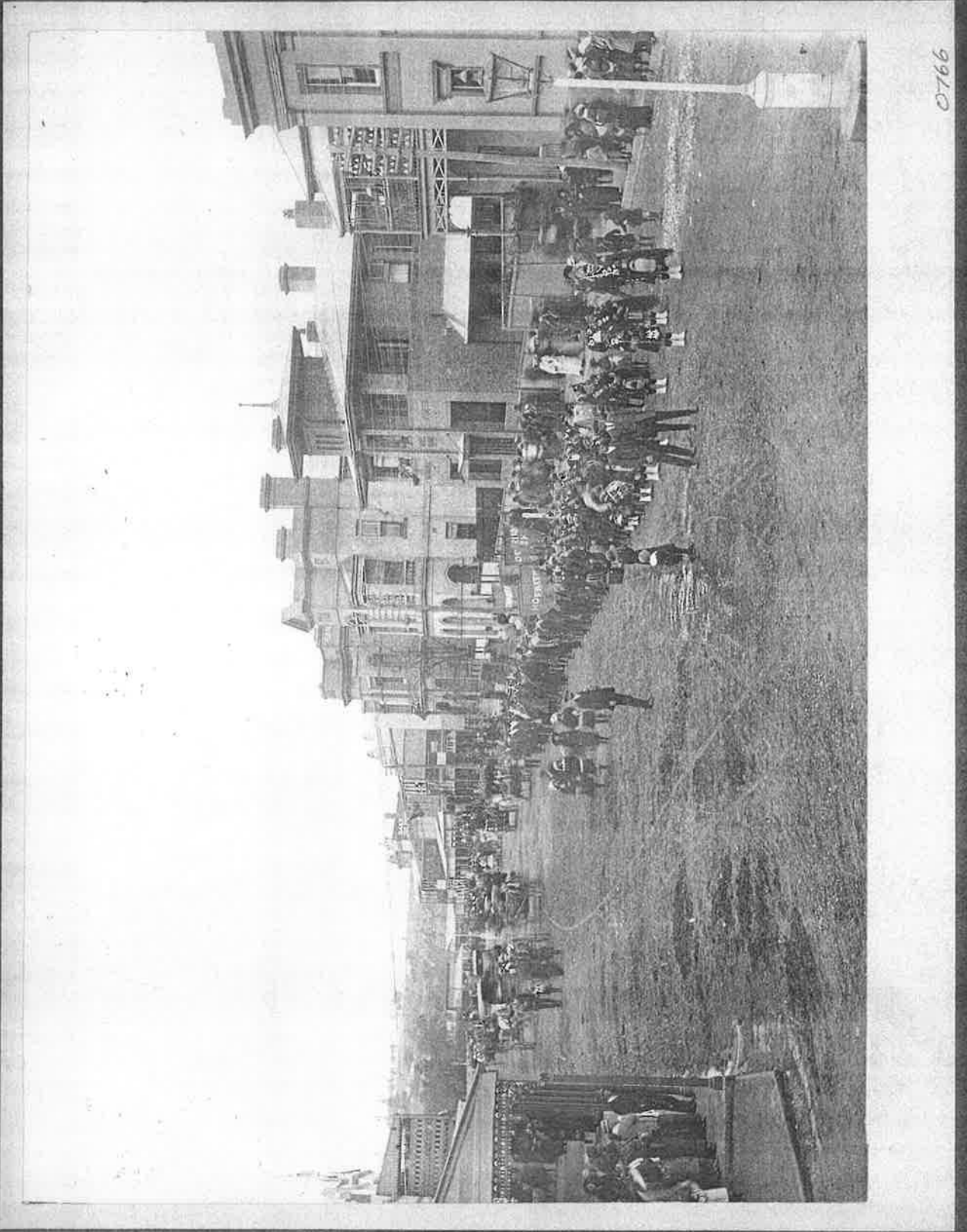
1/608



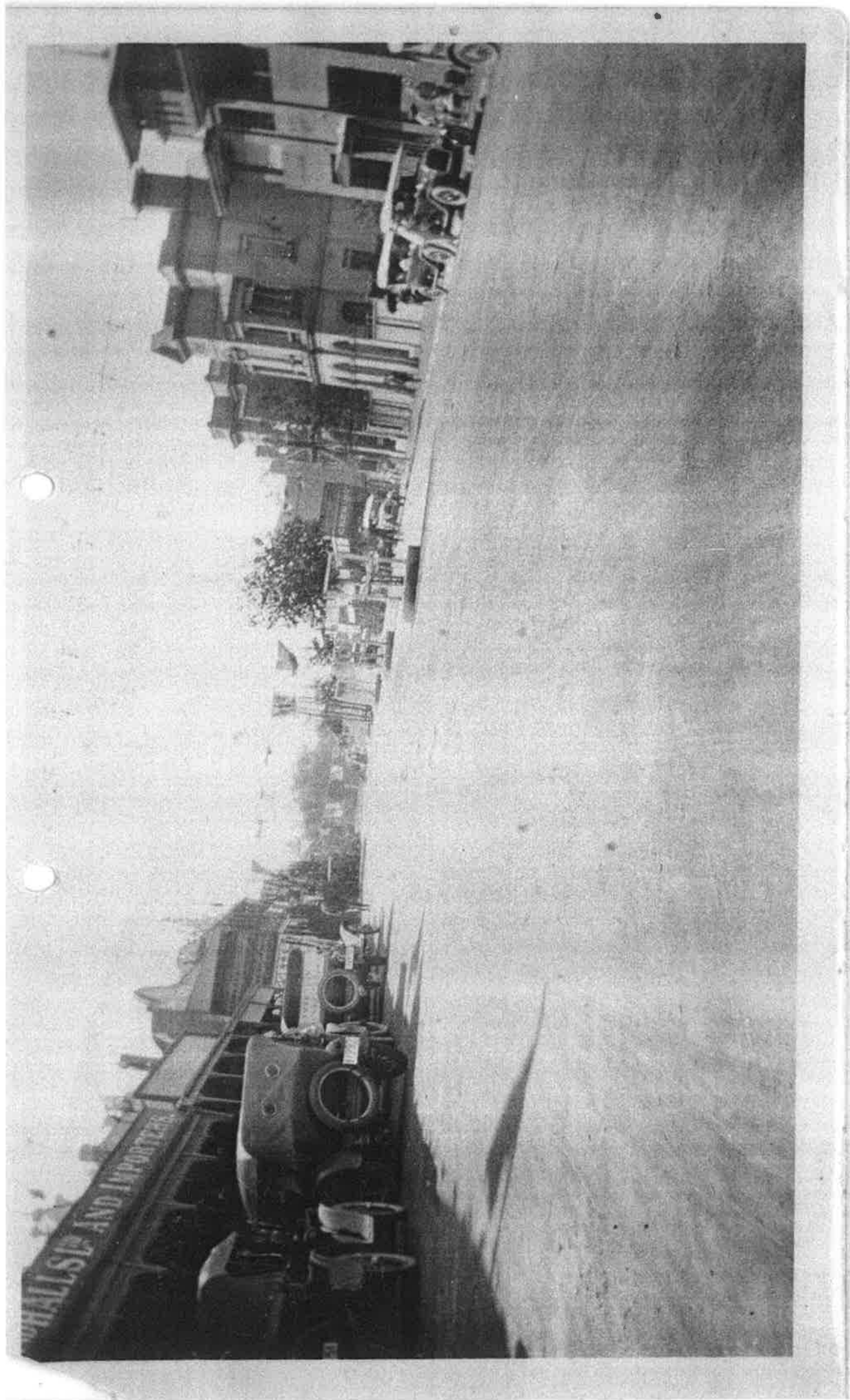


1926

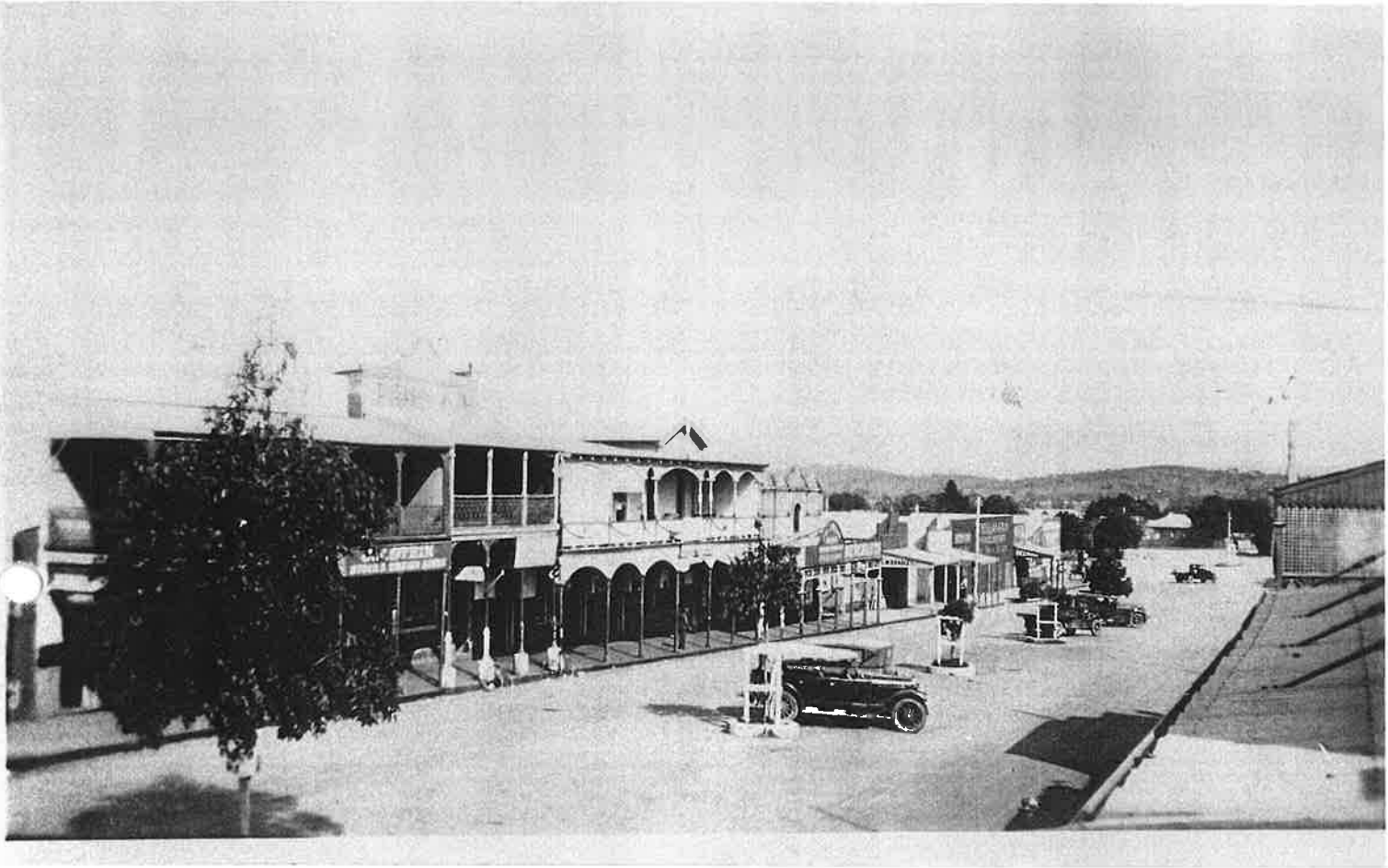
0797



0766



0675



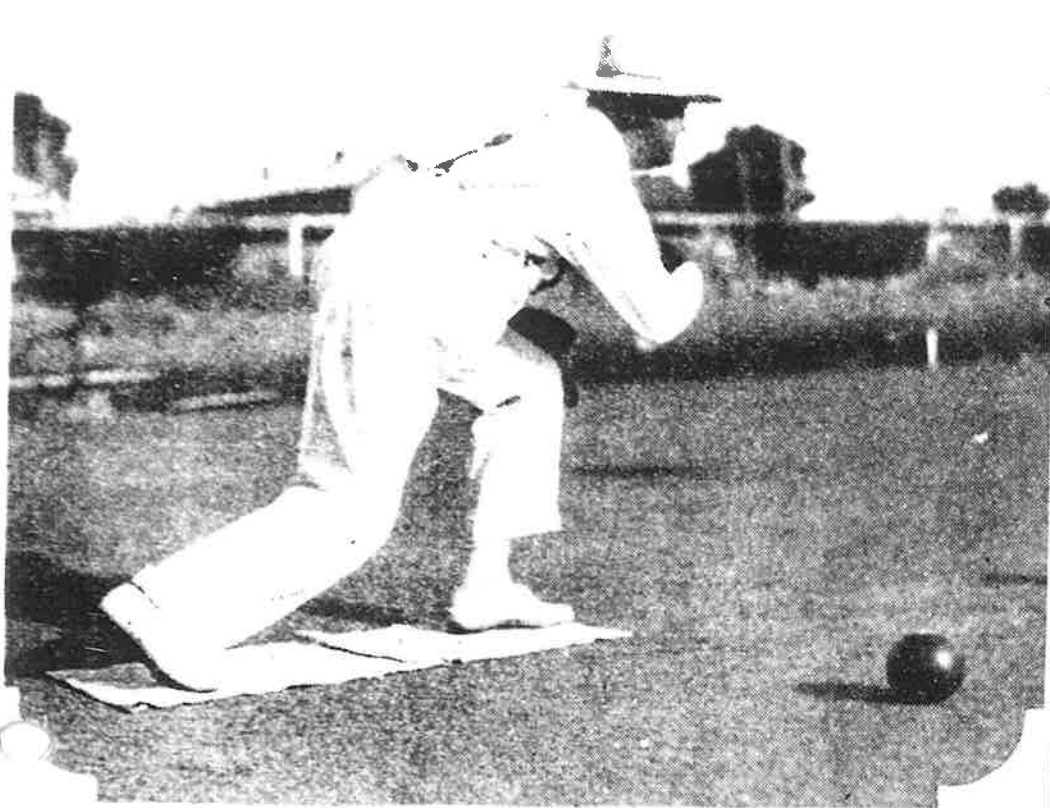
Main St Looking West.



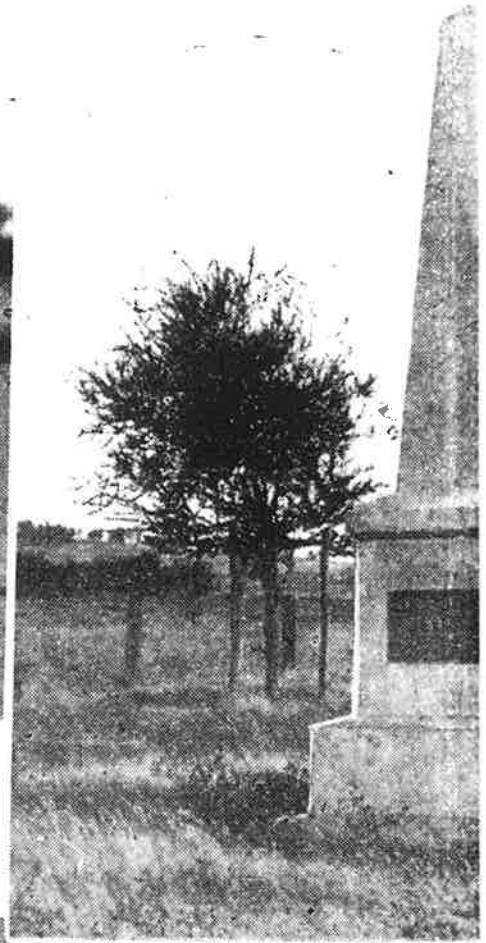
244/1



244/3



THE FATHER of a famous cricketer plays a different game. When Stau McCabe is occupied with Test matches, his father is to be found on the Grenfell bowling green.



ANOTHER PICTURE, taken from the air, of the town of Grenfell, one of the biggest wheat centres of the West.

TH
ME
pla
low
fell
Lav

TH
of
Bow
sho
hou
E

... the tower and the
£3000 to build.

... be seen in Camp Street
The foundation stone was
... for Lands, on Saturday,
... and the street was
... and manufacture was
... ony and £48 was placed
... id contained a large read-
... ns.

Wesleyan Church on the
... was laid on Wednesday,
... nior. The church was to
... and the money had been
... with interest to £152 in
... lowed. The building was
... with a porch seven feet
... pened by Rev. Pincombe
... id served for forty years
The parsonage was built

... nding today replaced the
... eards laid the foundation

... h of iron was destroyed
... ough its transition from
... was erected in its place.
... rch was laid and blessed
... ulburn, on May 27, 1906
... ted to £350. The church,
... s of brick with a massive

GRENFELL C.W.A. REST ROOM

The building is also used as the Baby Health Centre.

—Photo by William A. Bayley, 1953

A TYPICAL EXAMPLE OF COMMEMORATIVE ARCH

Throughout Grenfell's earlier days decorated arches spanning the main street were a feature of town celebrations and welcomes.

—Block by courtesy "Grenfell Record"





MAIN STREET, 1938, SHOWING PIONEERS MONUMENT.

787



MAIN ST, GRENFELL.

0796